

BPA 500™ Dual Mode Bluetooth® Protocol Analyzer

Pinpoint issues in Classic *Bluetooth* and *Bluetooth* low energy in a single user interface

BPA 500 Dual Mode Bluetooth protocol analyzer features:

- ProbeSync™ technology synchronizes timestamps between multiple ComProbes and multiple technologies.
- *Bluetooth* low energy and Classic *Bluetooth* data is displayed in a single graphical user interface.
- Live decoding and decryption of encrypted data.
- Scans and captures all three advertising channels concurrently.
- Decode all Classic *Bluetooth* and *Bluetooth* low energy traffic.
- Includes DecoderScript which allows specifying decodes for custom protocols.
- Capture multiple LE connections from the same LE (or dual mode) master as well as a single BR/EDR connection simultaneously.
- Follow pairing and decrypt encrypted traffic including Secure Simple Pairing.
- Visibility into all three advertising channels, even before connection is established.
- Ability to turn off whitening.

With the adoption of the *Bluetooth* 4.0 specification, *Bluetooth* low energy wireless technology is taking off and will change how the wireless world connects. Dual mode devices, combining *Bluetooth* low energy and Classic *Bluetooth* in a single device are making the already complicated task of developing *Bluetooth* devices that much more complex. The BPA 500 combines low energy and BR/EDR data in the same intuitive displays, simplifying and accelerating the debugging process.

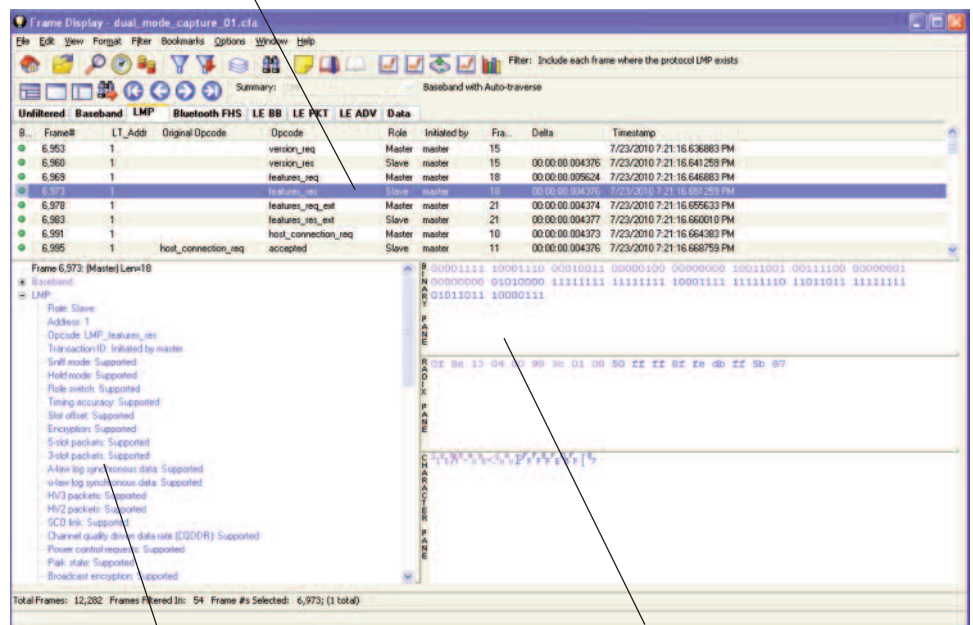
As the first wave of dual mode products begins to move from the laboratory to the field, Frontline is once again at the forefront, meeting the needs of *Bluetooth* developers for debugging, testing and verification....fast!

Developers and Test Engineers rely on Frontline Tools

Frontline is the acknowledged industry leader when it comes to *Bluetooth* sniffers. The Frontline BPA 500 is a new member of the trusted FTS4BT analyzer family and delivers the same dependable performance developers and test engineers have come to expect from Frontline. Just plug it in and go.

The Frontline BPA 500 is an invaluable tool to help developers and testers get through the design, debug, test, verify and qualification cycle quickly and reliably. In fact, no matter where you are in the chain, the Frontline BPA 500 will help you get your low energy wireless products to market sooner.

Summary pane: Displays and decodes the most important fields in the selected low energy protocol layer, so that you can analyze them in a glance.



Decode Pane: All captured data is decoded and verified in English in accordance with the specification

Raw Bytes: Shown in Binary, Hex and ASCII.



BPA 500™ Dual Mode Bluetooth® Protocol Analyzer

Unequaled Protocol Analysis only from Frontline.

HARDWARE SPECIFICATIONS

- **Bus Type:**

USB 2.0 Type A, compatible with USB1.1

- **Operating Frequencies:**

2402 MHz – 2480 MHz

- **Power:**

AC Adapter supplied. The outputs of the adapter is 9Vdc, 2A. The AC Adapter meets the following approvals:
IEC 60950-1:2005.

- **Dimensions:**

4.87" X 4" X 1.25"

125mm X 100mm X 32mm

- **Weight:** 0.6lb / 272g

- **Temperature:**

Storage Temperature:
0° to 40° Celsius
32° to 104° Fahrenheit
Operating Temperature:
5° to 55° Celsius
41° to 95° Fahrenheit

- **Humidity:**

Operating: 10% to 90% RH (non-condensing)

MINIMUM PC REQUIREMENTS

- Requires a Pentium PC 2GHz or faster, Windows XP (32-bit) & Windows 7 (32-bit & 64-bit) with a USB port plus 2GB of RAM and 50MB free disk space.

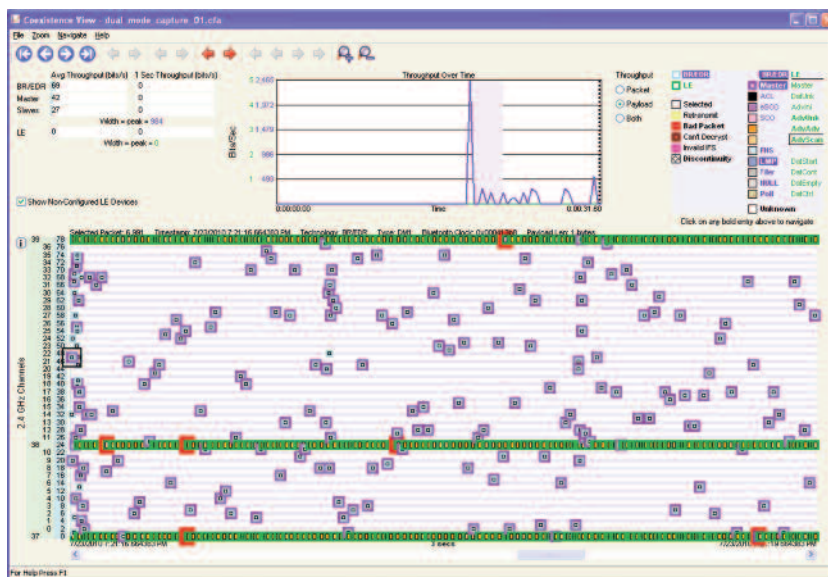
THE FRONTLINE EDGE

Frontline has been a proven protocol analyzer industry leader since 1985. The Frontline *Bluetooth* low energy analyzer is a member of the growing family of Frontline protocol analyzers, each of which incorporates our time-tested user interface and the DecoderScript protocol decoding language. Frontline analyzers support serial, Ethernet, *Bluetooth*, USB, ZigBee™ and numerous industrial protocols and buses such as Modbus, DH+, and DeviceNet ProfiNet.

FREE PREMIUM MAINTENANCE

The Frontline *Bluetooth* low energy analyzer is covered free for one year by your Premium Maintenance agreement so you'll receive free software, firmware, and protocol decoder upgrades for the term of your agreement. After a year, Premium Maintenance may be extended inexpensively. Bluetooth low energy technology moves fast; with Frontline products, so can you!

DUAL MODE COEXISTENCE VIEW MAKES ZEROING IN ON DATA FAST AND EASY!



ORDERING INFORMATION:

Sales@fte.com / 1.800.359.8570 US & Canada / +1.434.984.4500 / www.fte.com

Brandt-Data GmbH

Messtechnik • Protokollanalyse • Datenanalyse

Friedrich-Hayn-Str. 4
24582 Bordesholm / Germany

Tel: +49 (0) 43 22 - 699 657 • Fax - 699 658
info@brandt-data.de • www.brandt-data.de

frontline FTE.COM™
Debug Communications Faster!SM

www.fte.com/BPA500 / sales@fte.com / 1.800.359.8570 US & Canada / +1.434.984.4500 / Fax: 434.984.4505

© Copyright 2010. Frontline Test Equipment, Inc. All rights reserved. Frontline BPA 500 Dual Mode *Bluetooth* protocol analyzer and the Frontline logo are trademarks. *Debug Communications Faster!* is a service mark, and Frontline is registered trademark of Frontline Test Equipment, Inc. The *Bluetooth* word mark and logos are registered trademarks owned by Bluetooth SIG, Inc. and any use of such marks by Frontline is under license. Other trademarks and trade names are those of their respective owners.