

Sniff Out Trouble FAST!

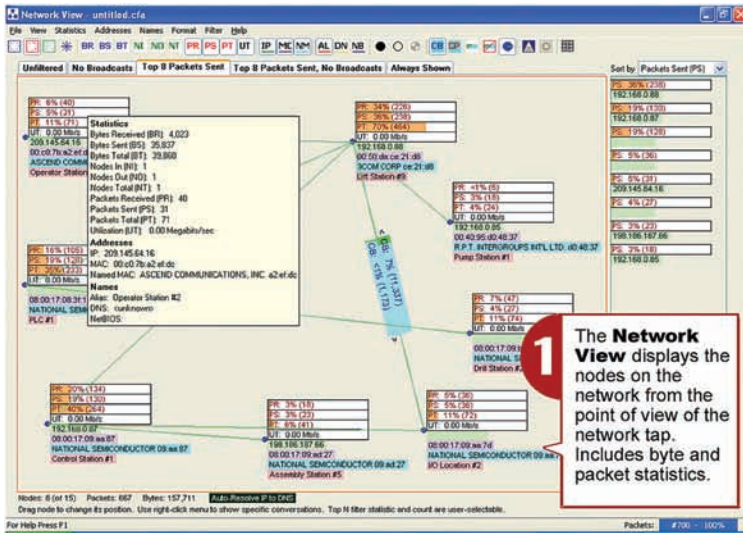
Ethertest™ PC-Based Ethernet LAN Analyzer

**NEW NETWORK
VIEW**

Monitor, Isolate, Identify

Turn any Windows desktop or notebook computer into a powerful Ethernet LAN analyzer. Frontline's EtherTest software lets you monitor and troubleshoot 10MB and 100MB networks.

This feature-rich protocol analyzer offers a suite of protocol decodes and a comprehensive array of network statistics which are in demand today by communications and network professionals. In applications ranging from finance to manufacturing, high-speed Ethernet networks are displacing slower-speed serial data communication networks as the solution of choice to interconnect instrumentation and equipment such as meters, gauges, sensors, transaction terminals, factory equipment, and other networked devices.



Node Statistics

EtherTest's new Network View enables you to see statistics on specific nodes including communications traffic details and node information for active nodes on the monitored side of the switch.

Individual Active Node Information

- Packets Transmitted and Received
- Bytes Transmitted and Received
- DNS Names
- Nodes In and Out
- Utilization Information
- Broadcast Information
- IP Address and MAC Address
- Named MAC Address
- NetBios Name
- Assigned User Friendly Names for each Node

EtherTest is a passive and easy-to-use network monitor that helps less-skilled troubleshooters understand what is happening on their communications networks. The **Network View**, **Statistics Display** and **Frame Display** are intuitive, easy to read, and quickly provide a wealth of information about the network. Although EtherTest is simple to work with, it does provide a level of sophisticated and detailed information demanded by today's network specialist.

Protocol Decoding

The detailed information in the **Frame Display** window is presented clearly and with as much, or as little, detail as you need.

- Summary Information for Messages Sent and Received
- Message Frame is Decoded into Text
- Protocol Errors Identified with Red Frame Numbers
- Message is Shown in Binary, Octal, Hex and ASCII
- Capture Filters Limit the Amount of Data Captured
- Display filters include:
 - Pre-Set Filters,
 - Node Information Filters,
 - User Defined Complex Filters
- Side-by-Side Comparisons with Multiple Display Windows
- For Custom Decodes use the included FrameDecoder® Development Kit

